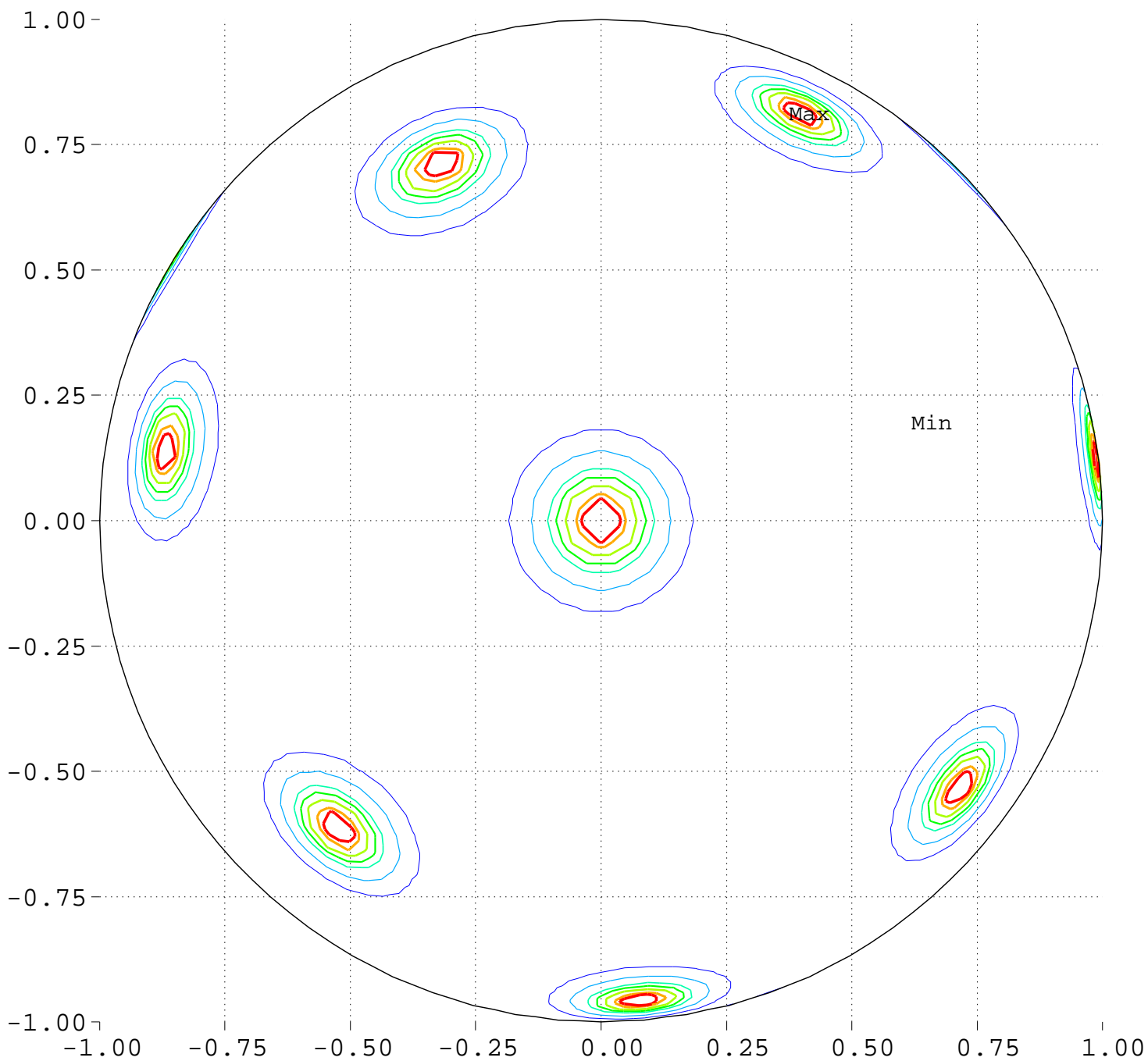


# Maximize Minimum Intensity for 16 Sources Source Locations

North Pole, 0 Deg = Right, 90 Deg = Top



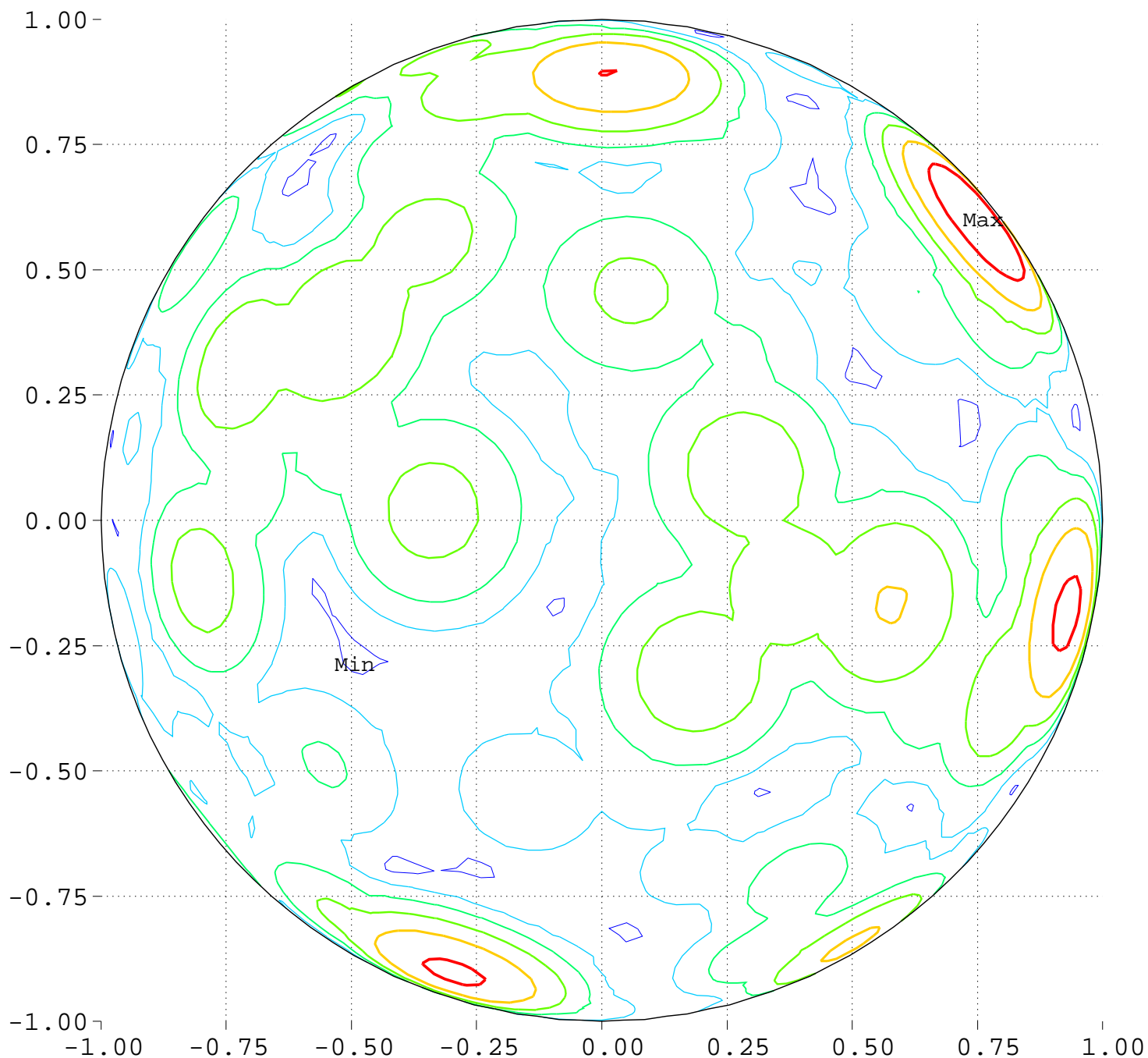
Minimum = 0.00      Maximum = 100.00

Contours around Nadirs of Sources



Maximize Minimum Intensity for 16 Sources  
Lowest Intensity: 3.882928

North Pole, 0 Deg = Right, 90 Deg = Top



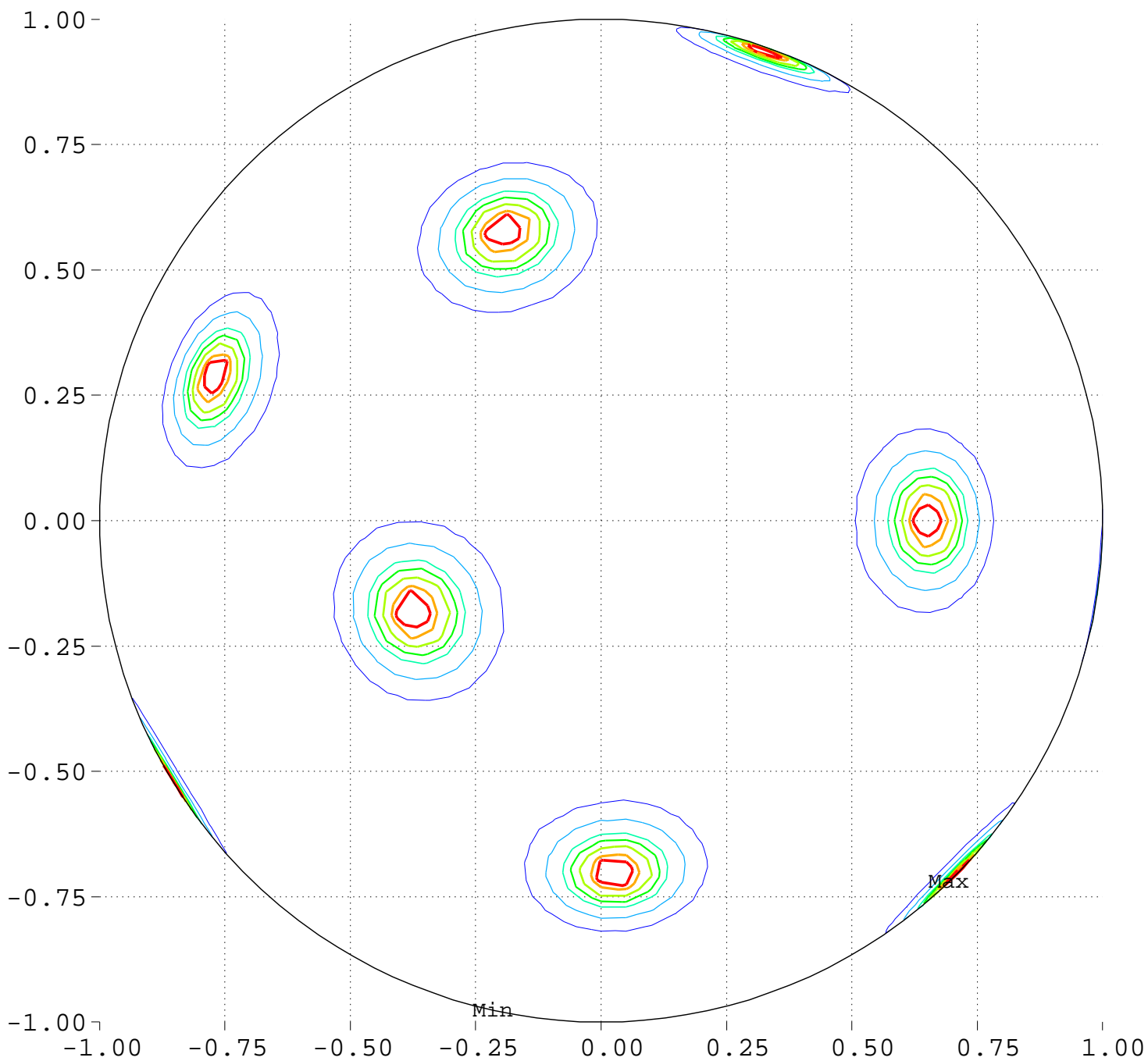
Minimum = 97.16      Maximum = 104.88

Contour Levels of Scaled Intensity

97.5000    98.7500    100.0000    101.2500    102.5000  
103.7500

# Maximize Minimum Intensity for 16 Sources Source Locations

South Pole, 0 Deg = Right, 270 Deg = Top



Minimum = 0.00      Maximum = 100.00

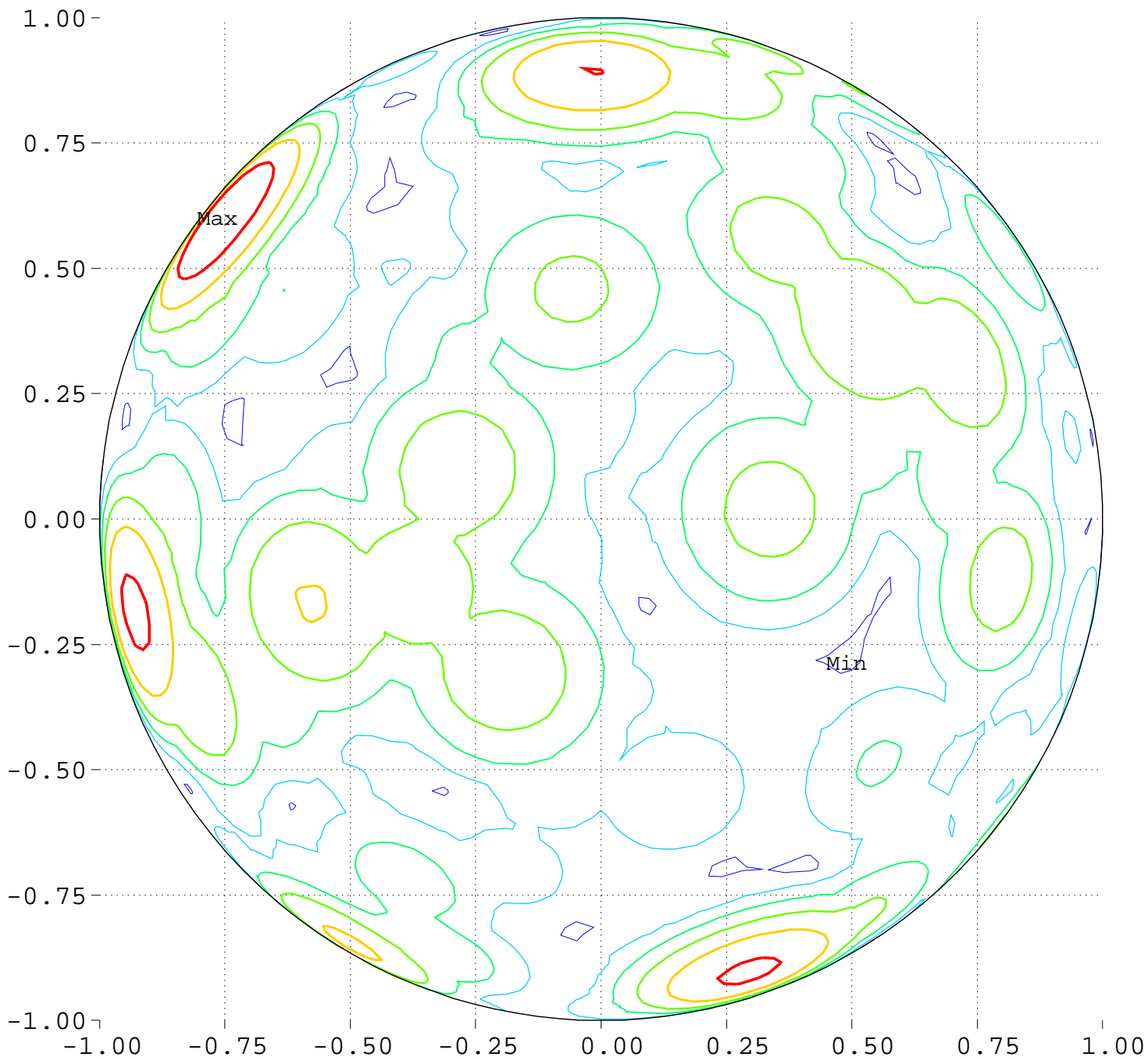
Contours around Nadirs of Sources



# Maximize Minimum Intensity for 16 Sources

Lowest Intensity: 3.882928

South Pole, 0 Deg = Right, 270 Deg = Top



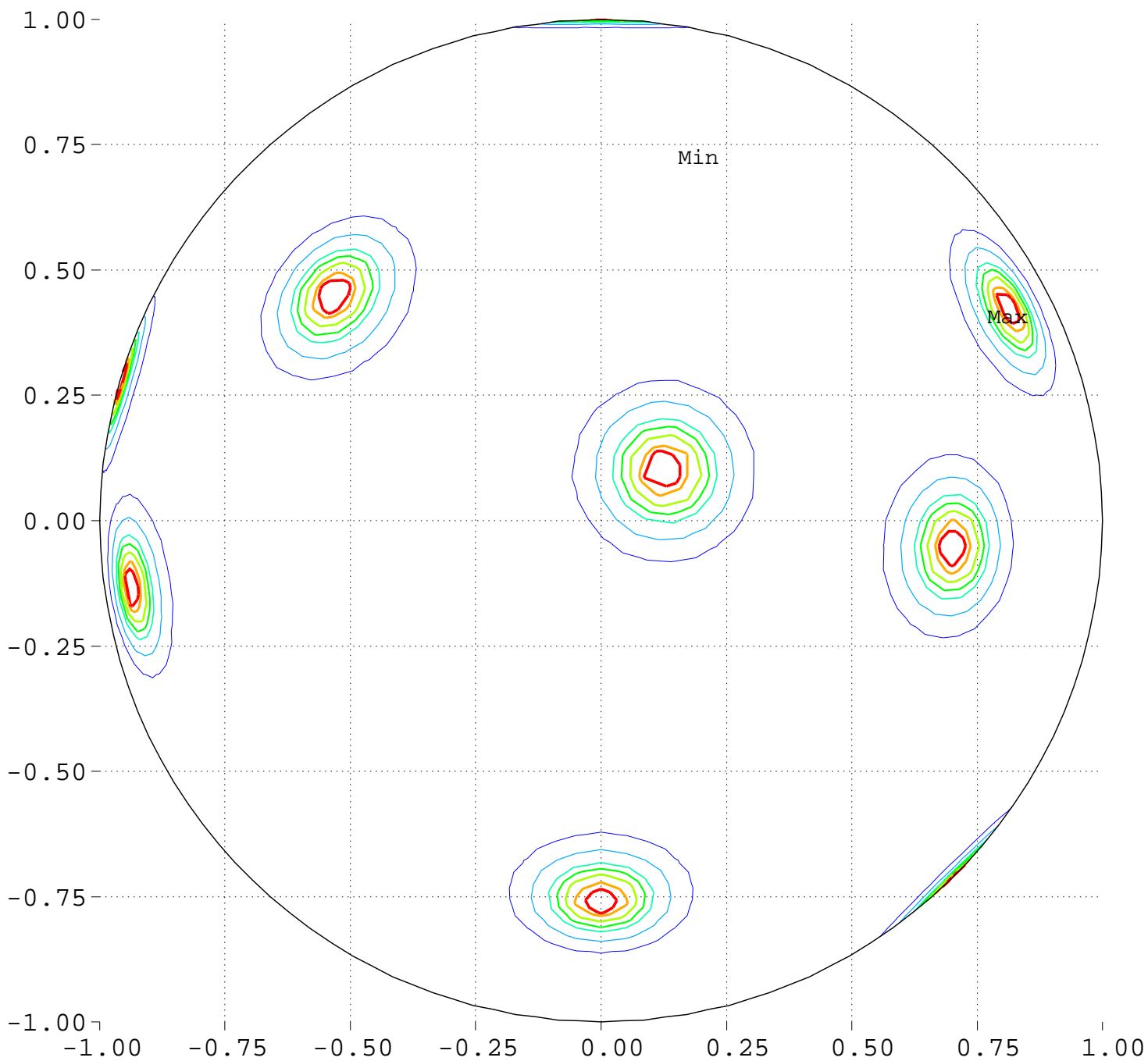
Minimum = 97.16      Maximum = 104.88

Contour Levels of Scaled Intensity

97.5000    98.7500    100.0000    101.2500    102.5000  
103.7500

# Maximize Minimum Intensity for 16 Sources Source Locations

Equator View, Longitude 0 Deg



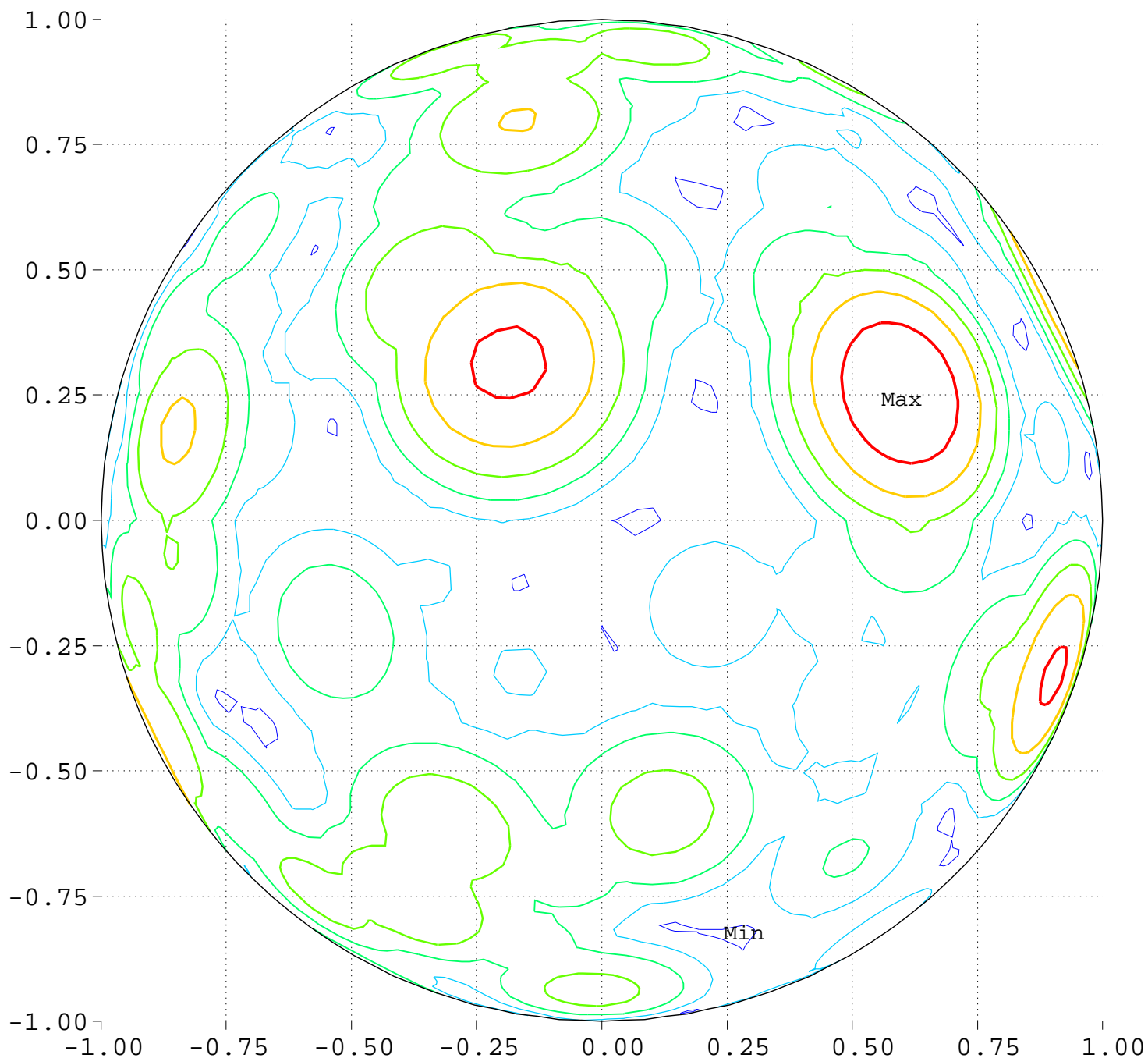
Minimum = 0.00      Maximum = 100.00

Contours around Nadirs of Sources



Maximize Minimum Intensity for 16 Sources  
Lowest Intensity: 3.882928

Equator View, Longitude 0 Deg



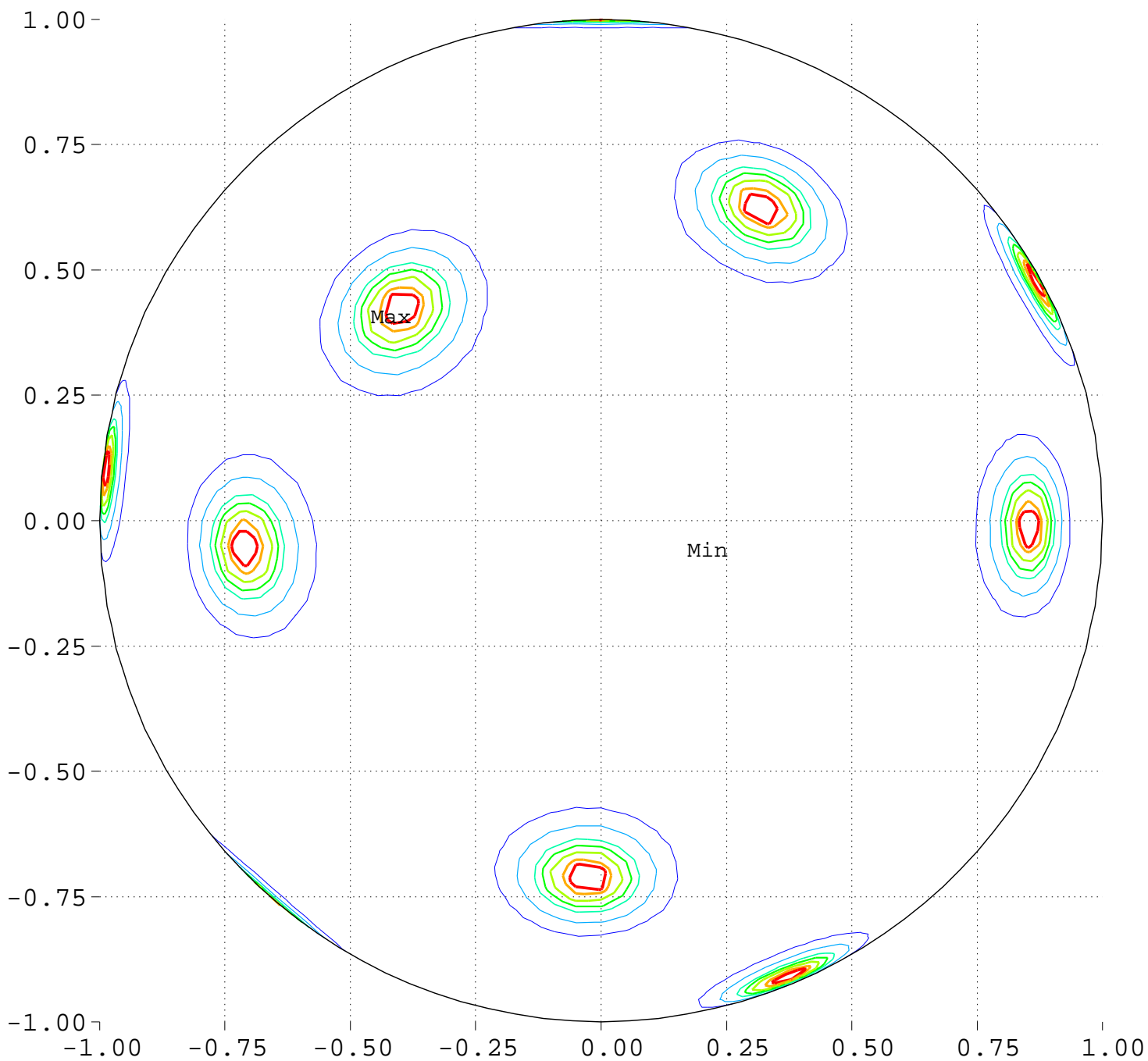
Minimum = 97.16      Maximum = 104.88

Contour Levels of Scaled Intensity

97.5000    98.7500    100.0000    101.2500    102.5000  
103.7500

# Maximize Minimum Intensity for 16 Sources Source Locations

Equator View, Longitude 90 Deg



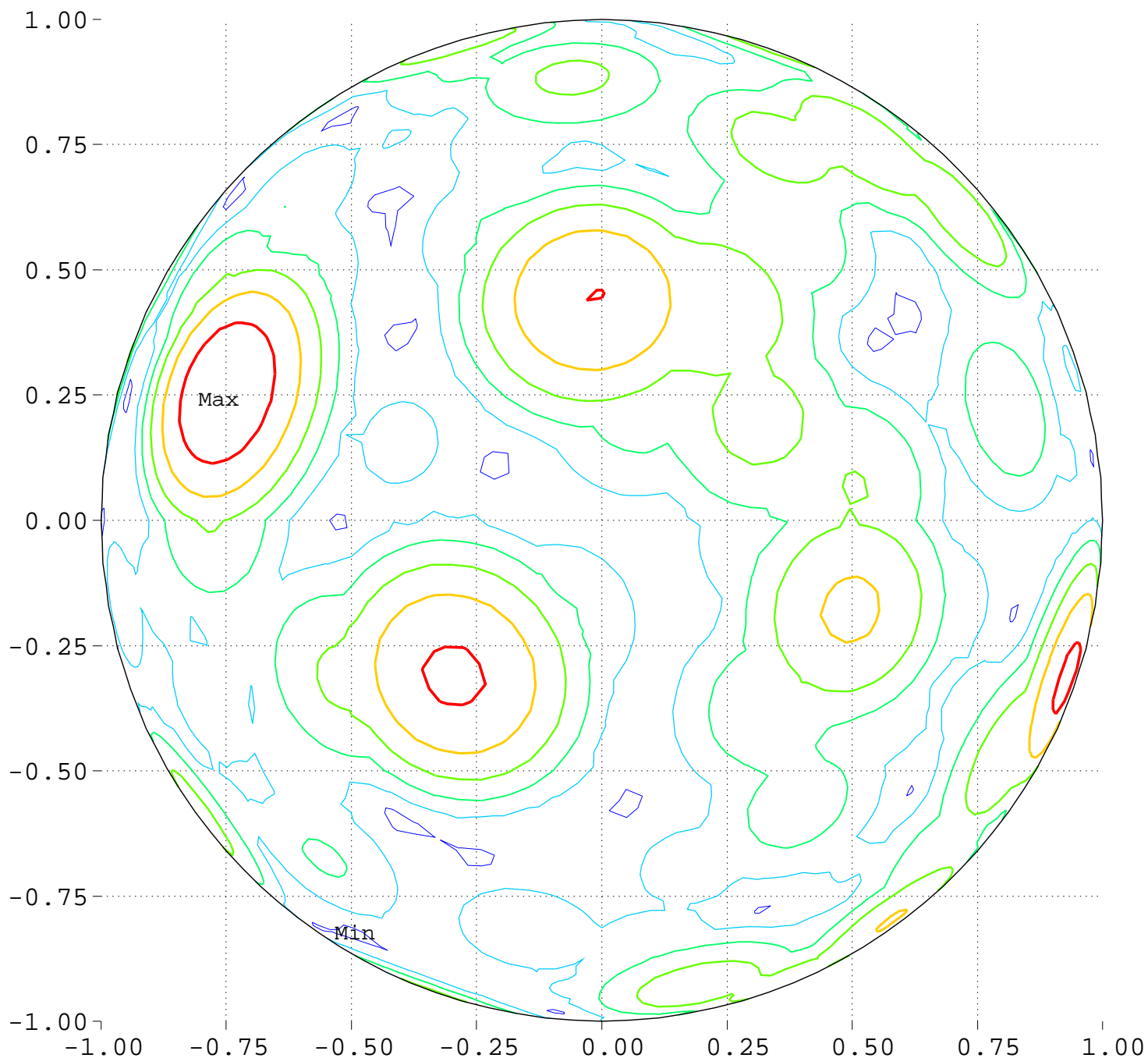
Minimum = 0.00      Maximum = 100.00

Contours around Nadirs of Sources



Maximize Minimum Intensity for 16 Sources  
Lowest Intensity: 3.882928

Equator View, Longitude 90 Deg



Minimum = 97.16      Maximum = 104.88

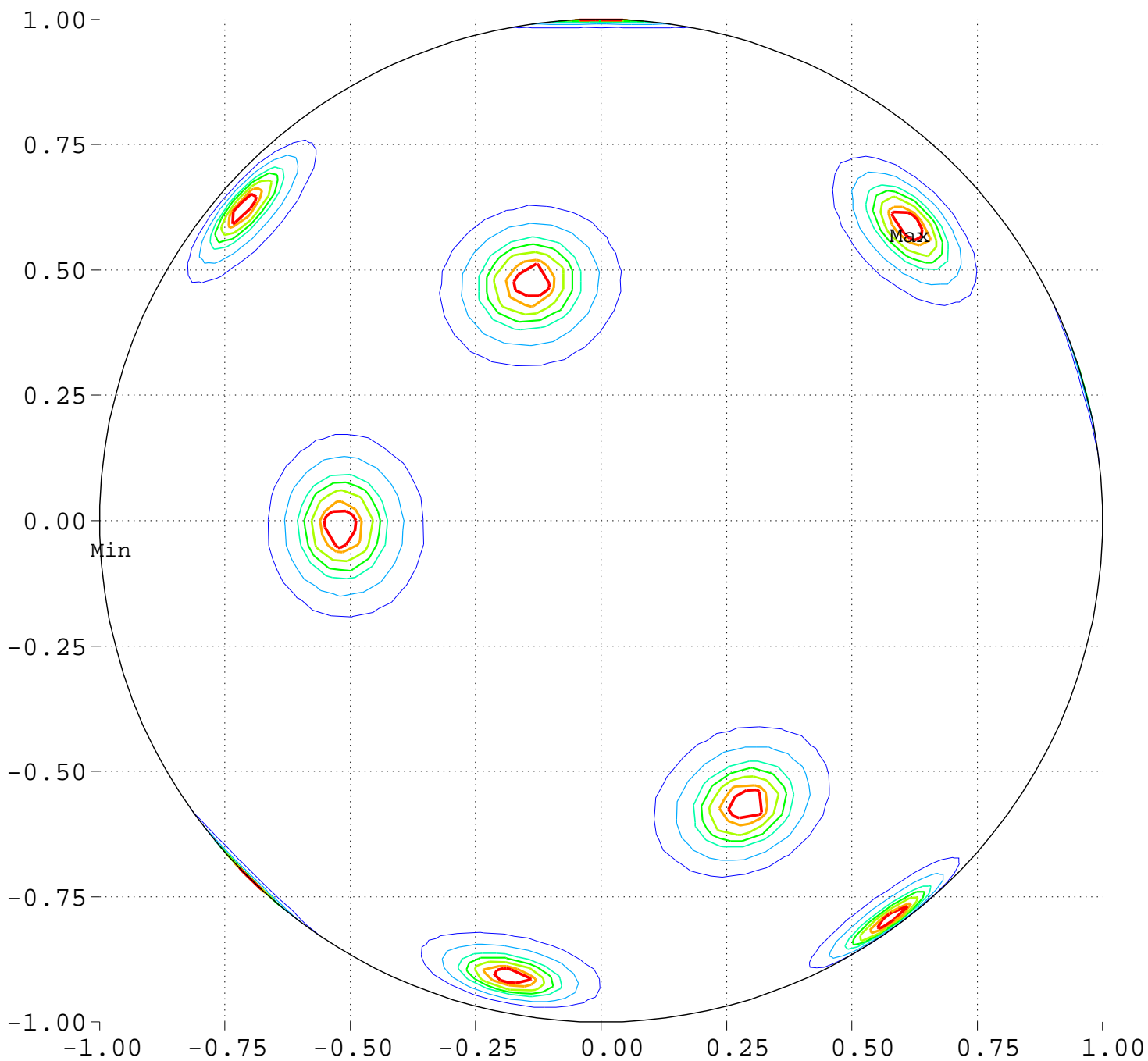
Contour Levels of Scaled Intensity

97.5000    98.7500    100.0000    101.2500    102.5000  
103.7500



# Maximize Minimum Intensity for 16 Sources Source Locations

Equator View, Longitude 180 Deg



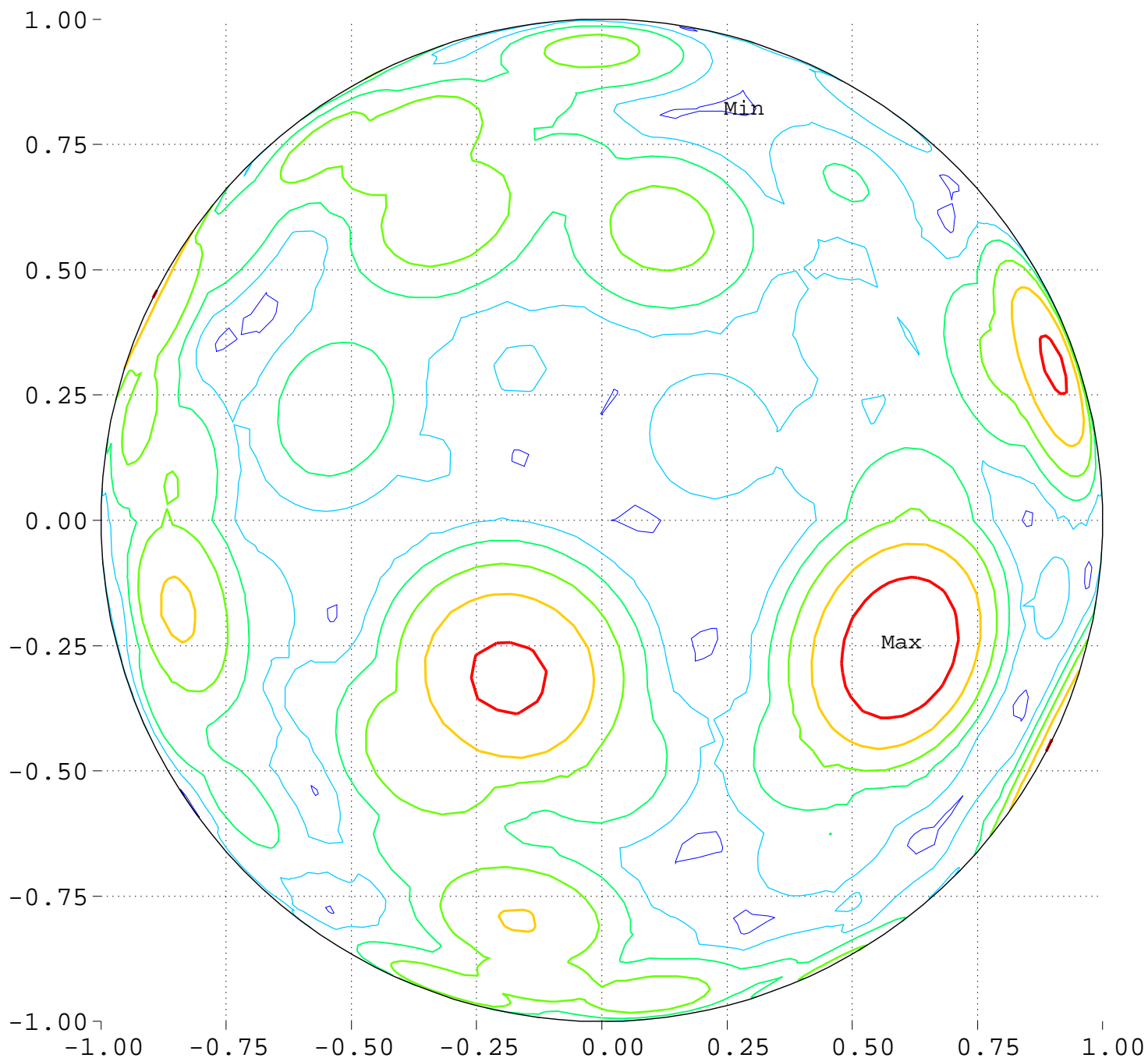
Minimum = 0.00      Maximum = 100.00

Contours around Nadirs of Sources

20.0000    40.0000    60.0000    70.0000    80.0000  
90.0000    95.0000

Maximize Minimum Intensity for 16 Sources  
Lowest Intensity: 3.882928

Equator View, Longitude 180 Deg



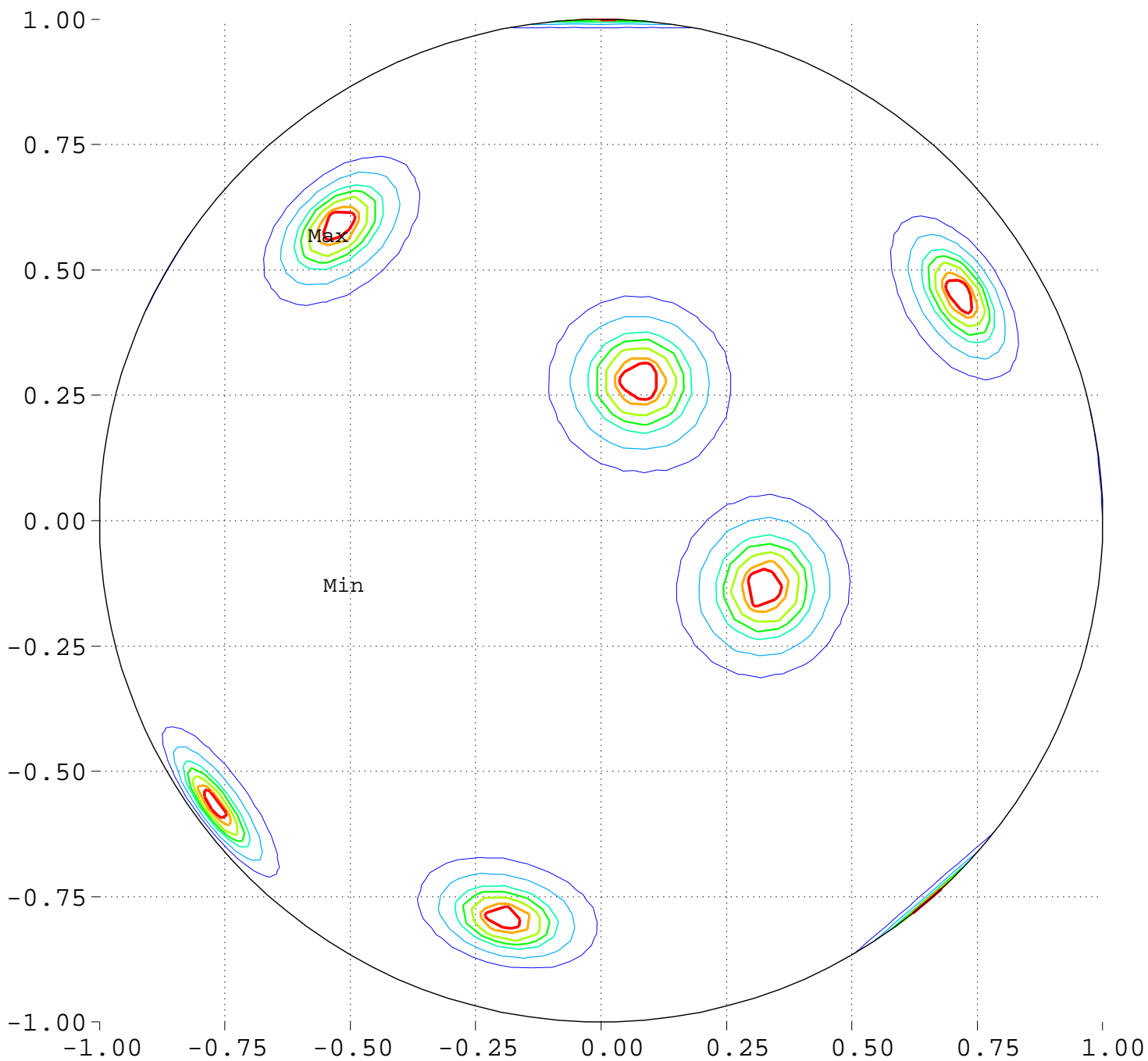
Minimum = 97.16      Maximum = 104.88

Contour Levels of Scaled Intensity

97.5000    98.7500    100.0000    101.2500    102.5000  
103.7500

# Maximize Minimum Intensity for 16 Sources Source Locations

Equator View, Longitude 270 Deg



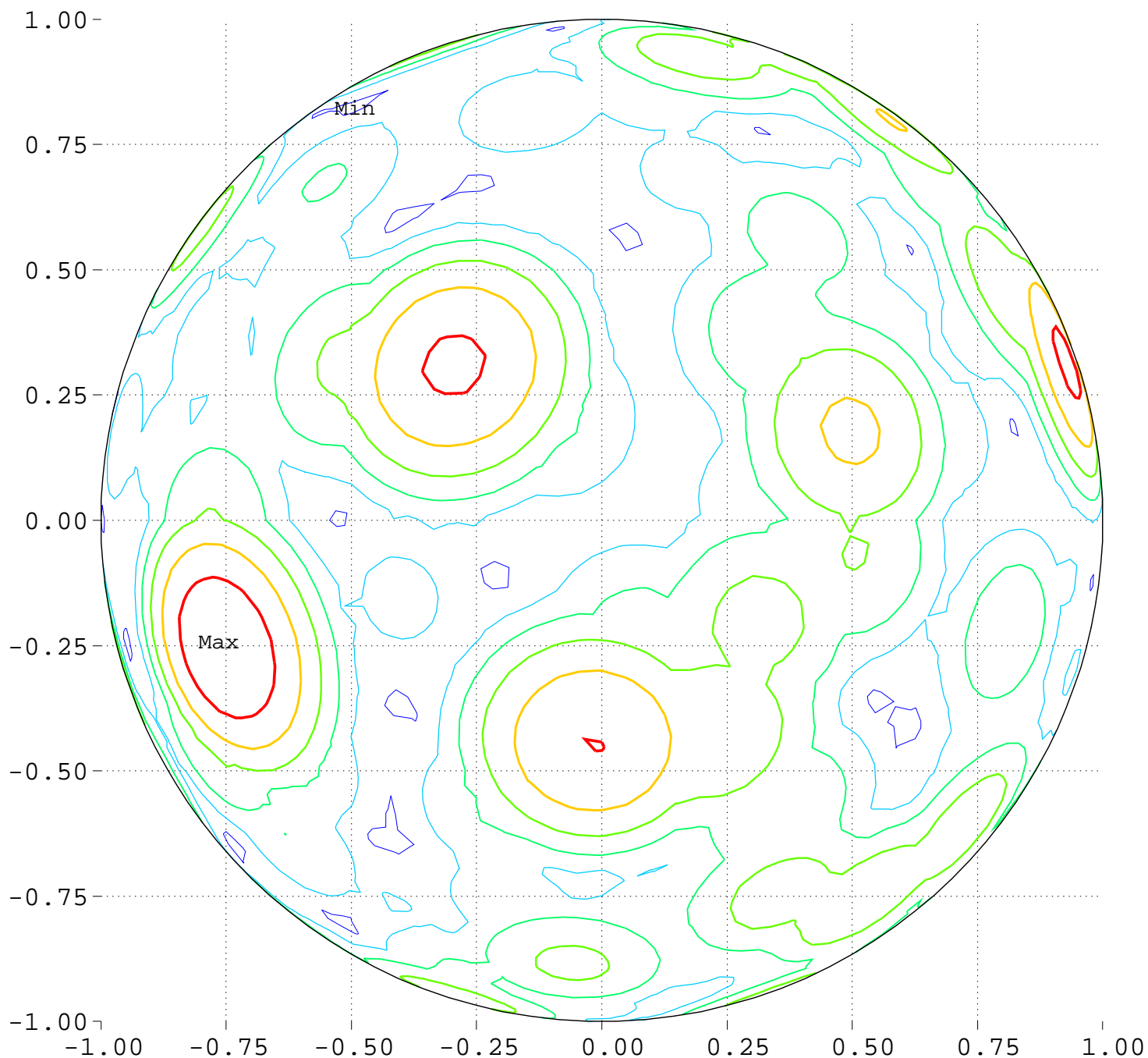
Minimum = 0.00      Maximum = 100.00

Contours around Nadirs of Sources

20.0000    40.0000    60.0000    70.0000    80.0000  
90.0000    95.0000

Maximize Minimum Intensity for 16 Sources  
Lowest Intensity: 3.882928

Equator View, Longitude 270 Deg



Minimum = 97.16      Maximum = 104.88

Contour Levels of Scaled Intensity

97.5000    98.7500    100.0000    101.2500    102.5000  
103.7500